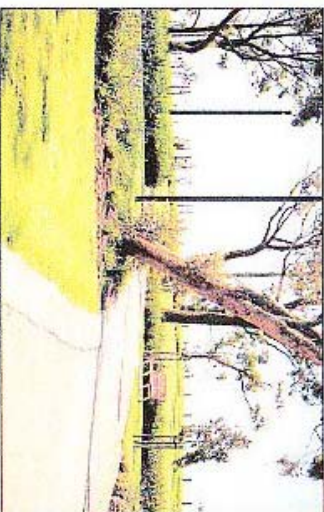
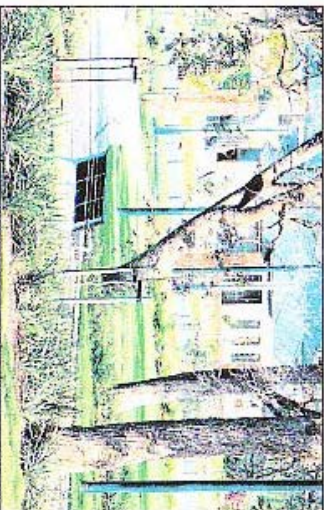
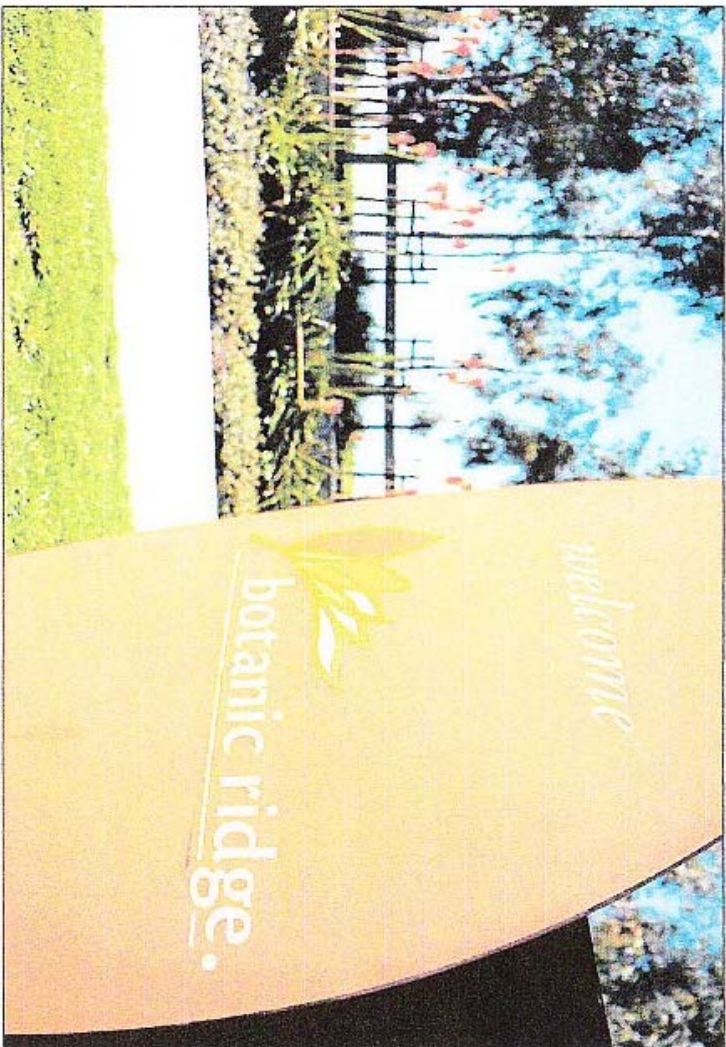


new homes & land

more properties @ Domain.com.au



Prized sites now selling

Botanic Ridge, the City of Casey's newest suburb and premier residential

development, has released the cream of the crop with stage nine in the Binowee precinct now selling.

Among the best positioned land in the Botanic Ridge estate, the precinct features a range of lots with direct access to the Binowee Wetters wetland and lake reserve.

With spectacular views and infinite lifestyle opportunities, the sites range from 700 to 1440 square metres.

Strong demand for the prime position Binowee sites has led to the release of this sought-after stage.

Its 37 blocks are tipped to sell fast.

Botanic Ridge development manager Joe Cassera said buyers had an exciting opportunity to buy in one of the best stages of the development.

"The Binowee Precinct encapsulates the best range of lot sizes and location," Mr Cassera said. "Many interested buyers are registering well ahead of the release."

The stage looks onto the Binowee Wetters parkland and will provide residents with views and access to the series of boardwalks and picnic spots

scattered throughout the wetland.

"With native plantings and meandering water bodies and spectacular lake, the Binowee Wetters reserve is one of the key features of the estate's master plan.

"The reserve has taken shape and is due for completion later this year.

"Buyers will have the best in lifestyle opportunities in Melbourne's newest suburb."

Botanic Ridge land sales from January to June were nearly double the same period last year.

It is attracting primarily move-up second and third-home buyers.

Botanic Ridge is also offering a range of lots in the Waraluh precinct priced from \$139,000.

PARTICULARS

Botanic Ridge

WHERE: Land sales centre, corner Pearcevale Road and Botanic Ridge Boulevard, Botanic Ridge (Melway 137 A2).

WHEN: Open noon-5pm Saturday to Thursday.

PRICE: \$159,000

CONTACT: Heather or Tony on 9785 9339 or visit www.botanicridge.com.au