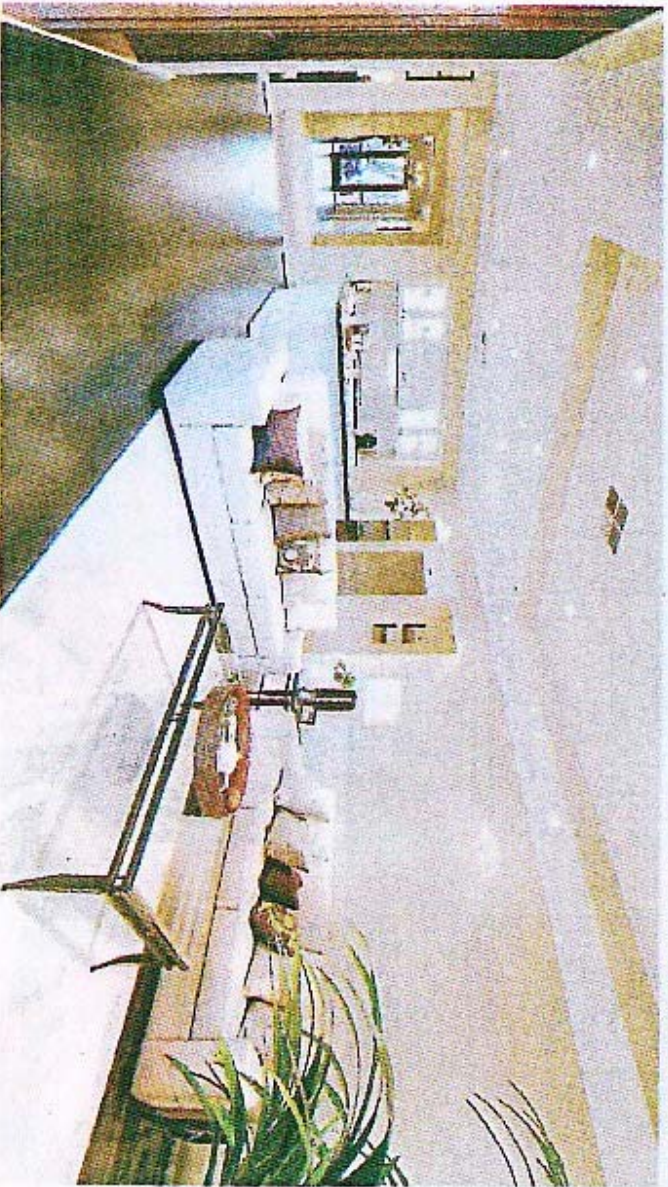


Estate puts builders in the spotlight



The City of Casey's popular new residential address Botanic Ridge is quickly becoming a go-to destination for home buyers with a dynamic new display centre.

Featuring a top selection of home designs from many of Melbourne's most prestigious builders, Botanic Ridge provides potential purchasers the ease of shopping for houses and land at one location.

Builders including Porter Davis, East West Homes, Superior Building Group and Premier Builders Group are displaying designs that have been built in line with the Botanic Ridge strategic design guidelines, which aim to provide a superior standard of housing throughout the estate.

During the coming months, Botanic Ridge will present each of the builders' designs in a special series dedicated to highlighting the homes on display.

Among them are the Bridgeport 35 and the Brookvale 46, by one of Victoria's most popular builders, Porter Davis.

The Bridgeport 35 single-storey home has 34.7 squares of living space, complete with an open-plan kitchen and lounge as well as a central alfresco dining area that would be ideal for entertaining.

With spacious living areas, four bedrooms, quality fittings and finishing, stainless steel appliances and plenty of room to move and grow, the Bridgeport home could be an ideal first, second or third home.

The double-storey Brookvale 46 design offers a contemporary family home with five bedrooms, a stylish kitchen, plenty of living space and a spacious upstairs kids' retreat. With the assistance of Botanic Ridge,

Porter Davis offers a variety of house and land packages that have been designed to suit the larger rural style of allotments available within the project.

Botanic Ridge development manager Joe Cassera said the quality and design of the Porter Davis homes fitted well with the style of the development.

"It is important that families and young couples can find a home to suit their lifestyle," he said. "Our vibrant new display centre now features a range of homes from different builders allowing prospective purchasers to really get a feel for this development."

"House and land packages offer an easy alternative for building your own home. With affordable packages now available from a wide selection of builders, we can take the hassle out of building. We have complete house and land packages at Botanic Ridge starting from just \$349,610.

"The estate offers buyers larger-than-average lots, with the majority of allotments over 750 square metres, making it ideal for families looking for room to grow in a scenic environment."

Priced from just \$174,000, Botanic Ridge is now selling lots in the Parks Precinct, ranging from 604 to 1214 square metres, which have immediate access to the Yeramba Reserve.

The estate's display centre is located on Botanic Ridge Boulevard, just off Pearce Dale Road. Both the Bridgeport and Brookvale homes are open from noon to 5pm, Saturday to Thursday.

For further information, contact Heather on 9785 9339.

